


Spring River Basin

Monitoring Sites

Legend

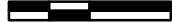
- Monitoring Sites
- ▭ Watersheds
- ▭ State Boundary
- ▭ County Boundary
- ▭ Waterbodies
- ▭ Streams
- ▭ Places

N

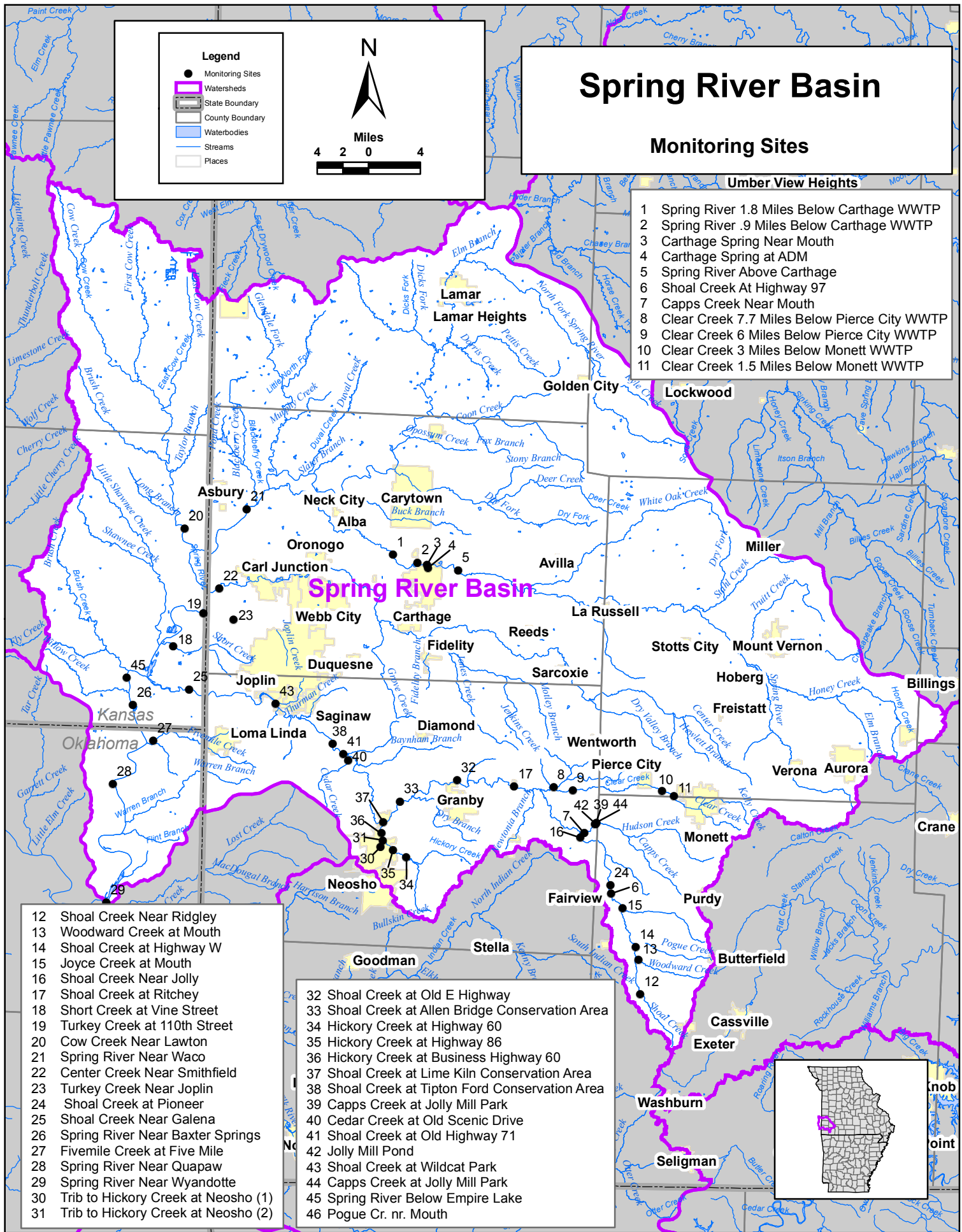


Miles

4 2 0 4



- Umbur View Heights**
- 1 Spring River 1.8 Miles Below Carthage WWTP
 - 2 Spring River .9 Miles Below Carthage WWTP
 - 3 Carthage Spring Near Mouth
 - 4 Carthage Spring at ADM
 - 5 Spring River Above Carthage
 - 6 Shoal Creek At Highway 97
 - 7 Capps Creek Near Mouth
 - 8 Clear Creek 7.7 Miles Below Pierce City WWTP
 - 9 Clear Creek 6 Miles Below Pierce City WWTP
 - 10 Clear Creek 3 Miles Below Monett WWTP
 - 11 Clear Creek 1.5 Miles Below Monett WWTP



- 12 Shoal Creek Near Ridgley
- 13 Woodward Creek at Mouth
- 14 Shoal Creek at Highway W
- 15 Joyce Creek at Mouth
- 16 Shoal Creek Near Jolly
- 17 Shoal Creek at Ritchey
- 18 Short Creek at Vine Street
- 19 Turkey Creek at 110th Street
- 20 Cow Creek Near Lawton
- 21 Spring River Near Waco
- 22 Center Creek Near Smithfield
- 23 Turkey Creek Near Joplin
- 24 Shoal Creek at Pioneer
- 25 Shoal Creek Near Galena
- 26 Spring River Near Baxter Springs
- 27 Fivemile Creek at Five Mile
- 28 Spring River Near Quapaw
- 29 Spring River Near Wyandotte
- 30 Trib to Hickory Creek at Neosho (1)
- 31 Trib to Hickory Creek at Neosho (2)

- 32 Shoal Creek at Old E Highway
- 33 Shoal Creek at Allen Bridge Conservation Area
- 34 Hickory Creek at Highway 60
- 35 Hickory Creek at Highway 86
- 36 Hickory Creek at Business Highway 60
- 37 Shoal Creek at Lime Kiln Conservation Area
- 38 Shoal Creek at Tipton Ford Conservation Area
- 39 Capps Creek at Jolly Mill Park
- 40 Cedar Creek at Old Scenic Drive
- 42 Jolly Mill Pond
- 43 Shoal Creek at Wildcat Park
- 44 Capps Creek at Jolly Mill Park
- 45 Spring River Below Empire Lake
- 46 Pogue Cr. nr. Mouth