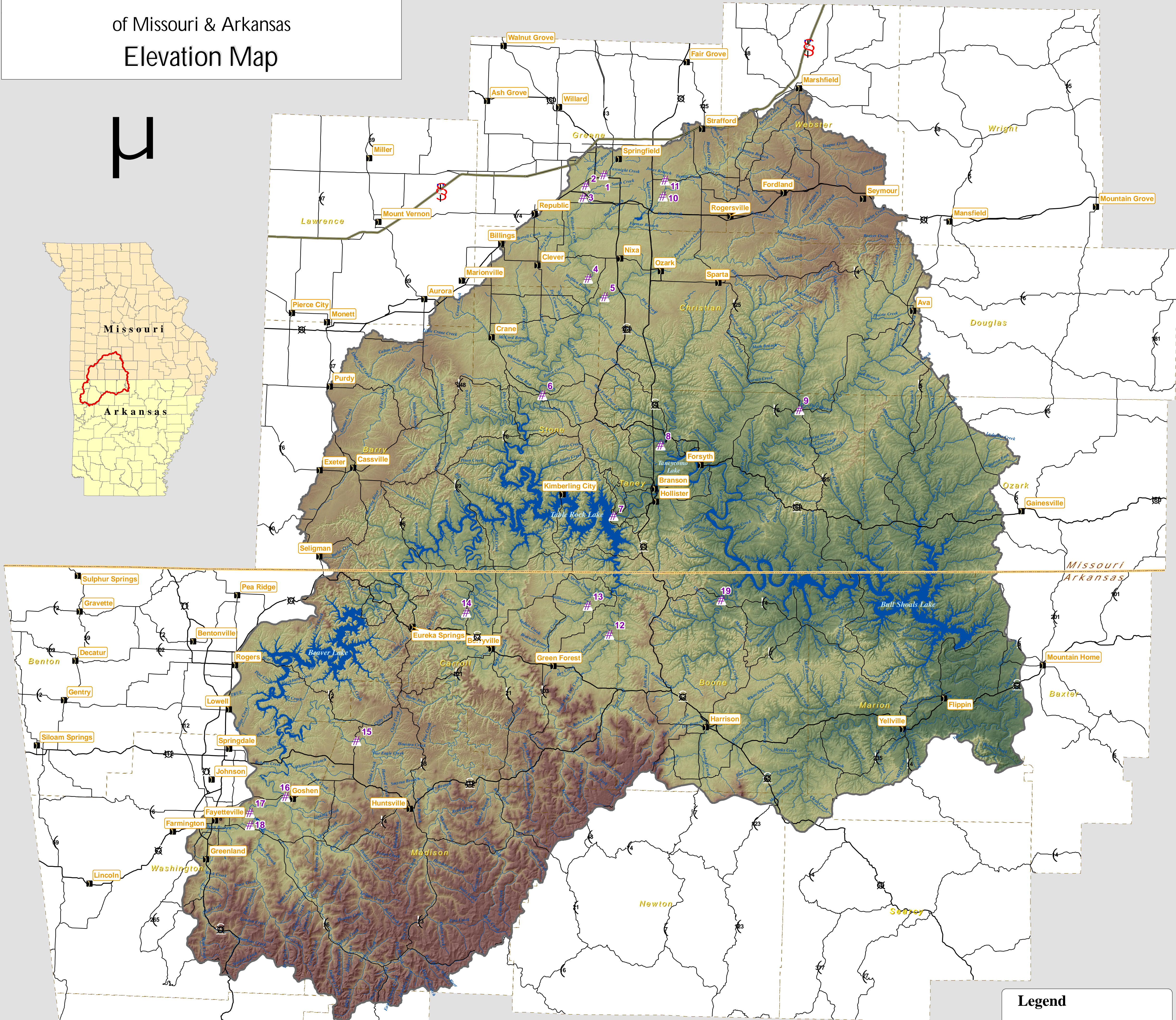
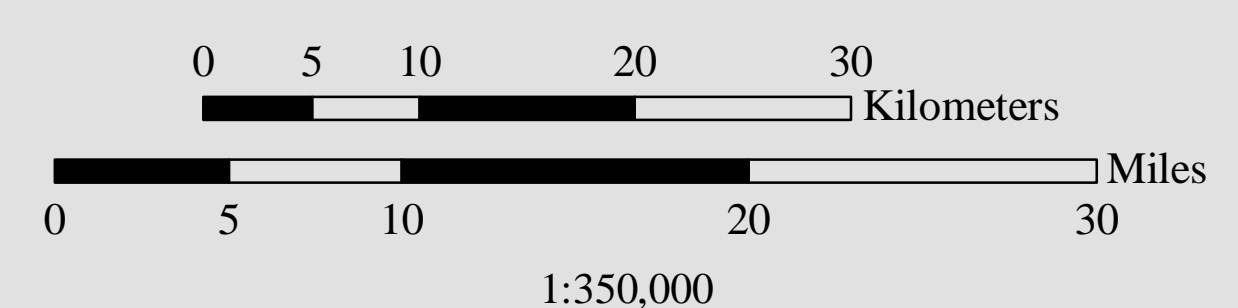


Upper White River Basin

of Missouri & Arkansas

Elevation Map



Sample Site Descriptions with Hydrology Data

Site #	Location	USGS Gage	HUC Name	HUC #	A _d km ²	Start Year	Yrs of Record	Low Flow on Record (m ³ /s)	Date of Low Flow	90% Exceeds (m ³ /s)	50% Exceeds (m ³ /s)	Mean (m ³ /s)	10% Exceeds (m ³ /s)	Max Flow on Record (m ³ /s)	Date of Max Flow
1	Wilson C. at Scenic Ave. MO	7052000	James River	11010002	46	1932	17	0.009	9/29/2004	0.08	0.24	0.52	1.05	191	7/12/2000
2	Wilson C. at Co Rd. 156 MO	7052100	James River	11010002	81	1972	17	0.000	many	0.00	0.16	0.59	1.25	155	7/12/2000
3	Wilson C. below WWT plant MO	7052152	James River	11010002	116	2001	4	0.028	4/13/2004	0.96	1.25	1.76	2.41	unk	5/8/2002
4	James R. Boaz MO	7052250	James River	11010002	1,197	1972	12	0.991	9/19/2002	1.90	6.74	14.39	30.30	615	5/8/2002
5	Finley C. Riverdale Rd. MO	7052345	James River	11010002	676	2001	4	0.309	8/28/2003	0.68	2.55	5.95	12.26	606	5/8/2002
6	James R. Galena MO	7052500	James River	11010002	2,556	1921	84	0.283	9/20/1954	3.43	12.06	27.73	60.32	2,073	9/25/1993
7	Below TableRock Dam MO	7053400	Beaver Reservoir	10010001	10,412	1956	49	na	na	na	na	na	na	na	na
8	Bull C. Walnut Shade MO	7053810	Bull Shoals Reservoir	11010003	495	1994	10	0.004	9/13/2004	0.16	1.90	5.92	12.77	unk	5/8/2002
9	Beaver C. Bradleyville MO	7054080	Bull Shoals Reservoir	11010003	772	1994	11	0.396	9/7/2001	0.82	2.80	7.53	16.51	589	5/8/2002
10	James R. Kinser Bridge MO	7050700	James River	11010002	637	1955	50	0.003	9/16/1956	0.34	2.07	6.54	14.05	1,164	9/25/1993
11	Pearson C. D Hwy. MO	7050690	James River	11010002	54	1999	6	0.040	9/7/2002	0.09	0.26	0.57	1.13	62	7/12/2000
12	Long C. Denver AR	7053207	Beaver Reservoir	11010001	269	2001	3	0.088	8/11/2003	0.21	1.22	2.86	4.70	476	6/10/2002
13	Yocum C. off Hwy 311 AR	7053250	Beaver Reservoir	11010001	137	1993	12	0.065	2/9/1998	0.22	0.54	1.28	2.92	266	4/24/2004
14	Kings R. Berryville AR	7050500	Beaver Reservoir	11010001	1,365	1939	46	0.003	8/27/1954	0.59	4.98	16.26	36.82	1,869	11/19/1985
15	War Eagle C. Hilland AR	7049000	Beaver Reservoir	11010001	681	1952	45	0.006	8/18/1954	0.28	2.21	7.90	16.23	1,388	11/19/1985
16	Richland C. Goshen AR	7048800	Beaver Reservoir	11010001	357	1998	7	0.010	9/3/2005	0.05	1.33	4.87	8.84	2,172	4/24/2004
17	White R. Fayetteville AR	7048600	Beaver Reservoir	11010001	1,036	1963	38	0.002	10/22/1991	0.18	4.96	15.58	35.40	3,965	4/24/2004
18	W. Fork White R. Fayetteville AR	7048550	Beaver Reservoir	11010001	319	2001	4	0.000	1/1/2003	0.10	1.27	5.15	8.69	1,696	4/24/2004
19	Bear C. Hwy 14 Omaha AR	7054410	Bull Shoals Reservoir	11010003	344	2001	3	0.028	8/21/2003	0.22	1.05	3.31	5.66	532	4/24/2004

Notes
na = Data not applicable due to reservoir releases
unk = Unknown Q at high flows
A_d = Drainage Area (km²)

Conversion Factors:
Discharge Records are provided in m³/s
1 m³/s = 35.31 ft³/s
1 m³/s = 22.83 million gallons/day

*Data collection period March 2005 - February 2006 monthly.

Legend

- # Sampling Sites
- Cities (population >= 100)
- Ⓢ Interstate Highway
- Ⓜ U.S. Highway
- Ⓜ State Highway
- Waterbodies
- Streams
- Basin Boundary
- Counties
- elevation
 - 759 m (2490 ft)
 - 143 m (469 ft)
- State Boundary

Data Source: USGS, MSDIS, ESRI, CAST, Corps of Engineers & Arkansas Department of Environmental Quality
Projection: NAD 1983 UTM Zone 15N
Cartographer: Stacey Armstrong
Date: February 2007

