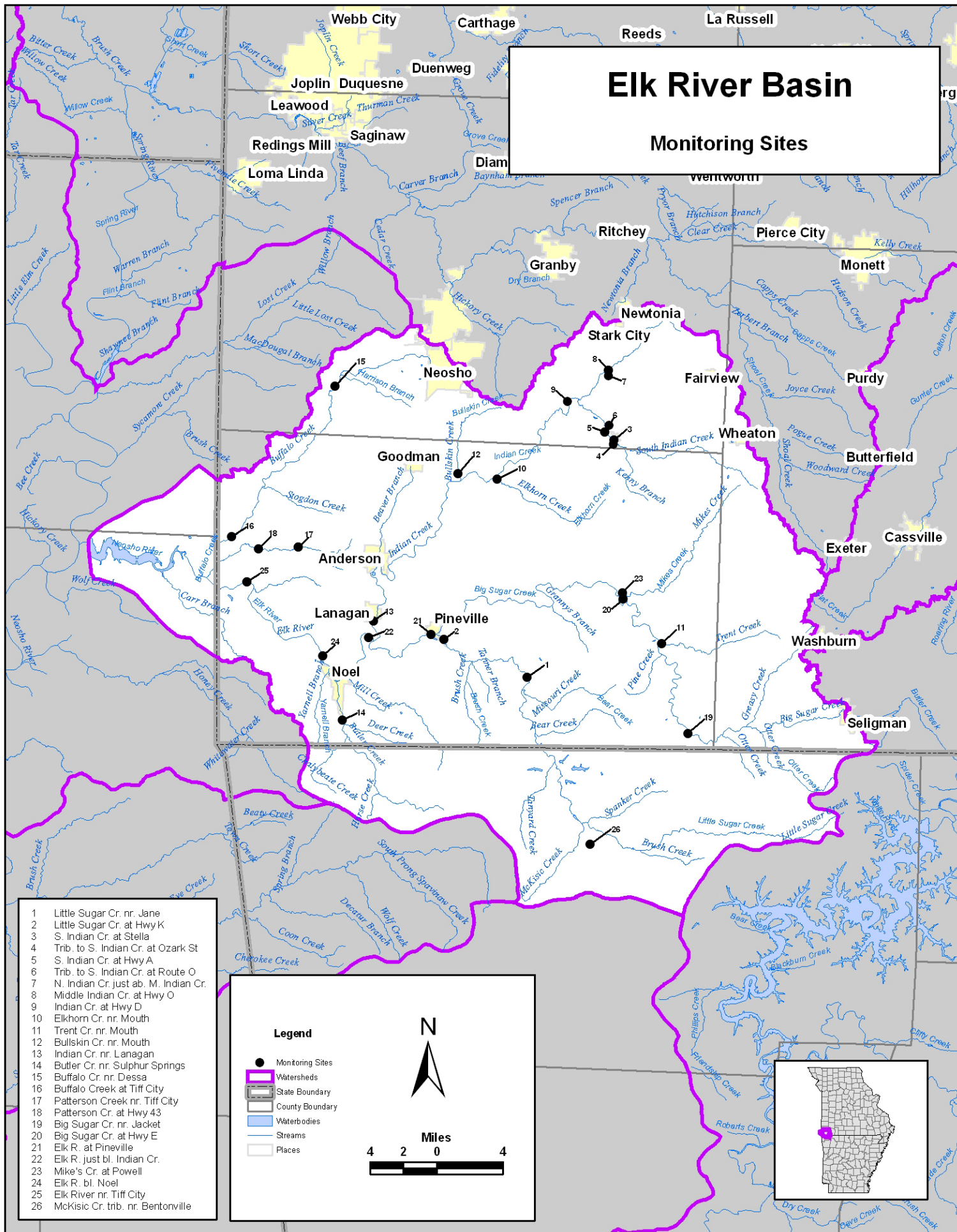


Elk River Basin

Monitoring Sites



- 1 Little Sugar Cr. nr. Jane
- 2 Little Sugar Cr. at Hwy K
- 3 S. Indian Cr. at Stella
- 4 Trib. to S. Indian Cr. at Ozark St
- 5 S. Indian Cr. at Hwy A
- 6 Trib. to S. Indian Cr. at Route O
- 7 N. Indian Cr. just ab. M. Indian Cr.
- 8 Middle Indian Cr. at Hwy O
- 9 Indian Cr. at Hwy D
- 10 Elkhorn Cr. nr. Mouth
- 11 Trent Cr. nr. Mouth
- 12 Bullskin Cr. nr. Mouth
- 13 Indian Cr. nr. Lanagan
- 14 Butler Cr. nr. Sulphur Springs
- 15 Buffalo Cr. nr. Dessa
- 16 Buffalo Creek at Tiff City
- 17 Patterson Creek nr. Tiff City
- 18 Patterson Cr. at Hwy 43
- 19 Big Sugar Cr. nr. Jacket
- 20 Big Sugar Cr. at Hwy E
- 21 Elk R. at Pineville
- 22 Elk R. just bl. Indian Cr.
- 23 Mike's Cr. at Powell
- 24 Elk R. bl. Noel
- 25 Elk River nr. Tiff City
- 26 McKisic Cr. trib. nr. Bentonville

Legend

- Monitoring Sites
- ▭ Watersheds
- ▭ State Boundary
- ▭ County Boundary
- ▭ Waterbodies
- ▭ Streams
- ▭ Places

N

Miles

4 2 0 4

