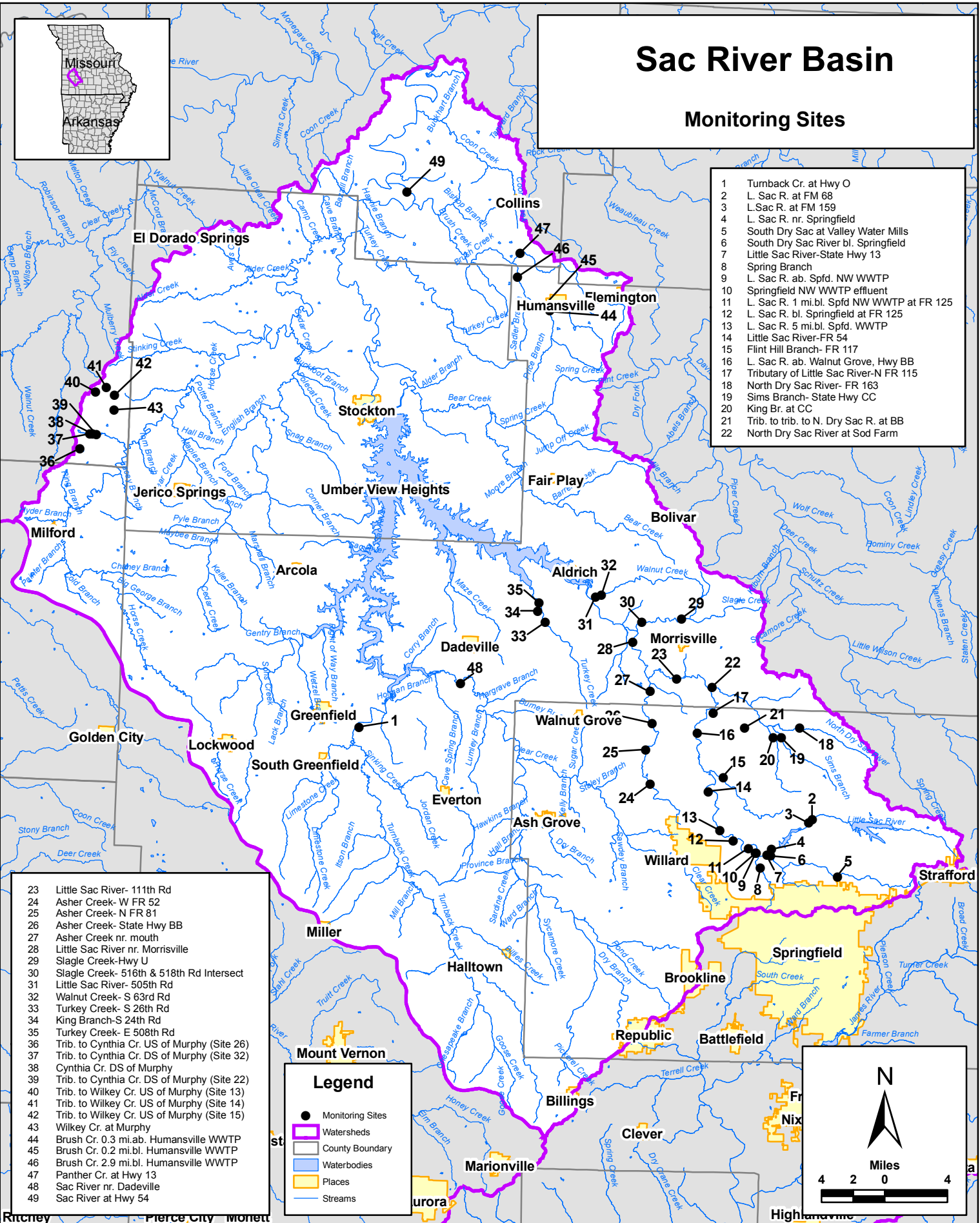




Sac River Basin

Monitoring Sites

- 1 Turnback Cr. at Hwy O
- 2 L. Sac R. at FM 68
- 3 L. Sac R. at FM 159
- 4 L. Sac R. nr. Springfield
- 5 South Dry Sac at Valley Water Mills
- 6 South Dry Sac River bl. Springfield
- 7 Little Sac River-State Hwy 13
- 8 Spring Branch
- 9 L. Sac R. ab. Spfd. NW WWTP
- 10 Springfield NW WWTP effluent
- 11 L. Sac R. 1 mi.bl. Spfd NW WWTP at FR 125
- 12 L. Sac R. bl. Springfield at FR 125
- 13 L. Sac R. 5 mi.bl. Spfd. WWTP
- 14 Little Sac River-FR 54
- 15 Flint Hill Branch- FR 117
- 16 L. Sac R. ab. Walnut Grove, Hwy BB
- 17 Tributary of Little Sac River-N FR 115
- 18 North Dry Sac River- FR 163
- 19 Sims Branch- State Hwy CC
- 20 King Br. at CC
- 21 Trib. to trib. to N. Dry Sac R. at BB
- 22 North Dry Sac River at Sod Farm



- 23 Little Sac River- 111th Rd
- 24 Asher Creek- W FR 52
- 25 Asher Creek- N FR 81
- 26 Asher Creek- State Hwy BB
- 27 Asher Creek nr. mouth
- 28 Little Sac River nr. Morrisville
- 29 Slagle Creek-Hwy U
- 30 Slagle Creek- 516th & 518th Rd Intersect
- 31 Little Sac River- 505th Rd
- 32 Walnut Creek- S 63rd Rd
- 33 Turkey Creek- S 26th Rd
- 34 King Branch-S 24th Rd
- 35 Turkey Creek- E 508th Rd
- 36 Trib. to Cynthia Cr. US of Murphy (Site 26)
- 37 Trib. to Cynthia Cr. DS of Murphy (Site 32)
- 38 Cynthia Cr. DS of Murphy
- 39 Trib. to Cynthia Cr. DS of Murphy (Site 22)
- 40 Trib. to Wilkey Cr. US of Murphy (Site 13)
- 41 Trib. to Wilkey Cr. US of Murphy (Site 14)
- 42 Trib. to Wilkey Cr. US of Murphy (Site 15)
- 43 Wilkey Cr. at Murphy
- 44 Brush Cr. 0.3 mi.ab. Humansville WWTP
- 45 Brush Cr. 0.2 mi.bl. Humansville WWTP
- 46 Brush Cr. 2.9 mi.bl. Humansville WWTP
- 47 Panther Cr. at Hwy 13
- 48 Sac River nr. Dadeville
- 49 Sac River at Hwy 54

Legend

- Monitoring Sites
- ▭ Watersheds
- ▭ County Boundary
- ▭ Waterbodies
- ▭ Places
- ▭ Streams

North Arrow

Miles

4 2 0 4