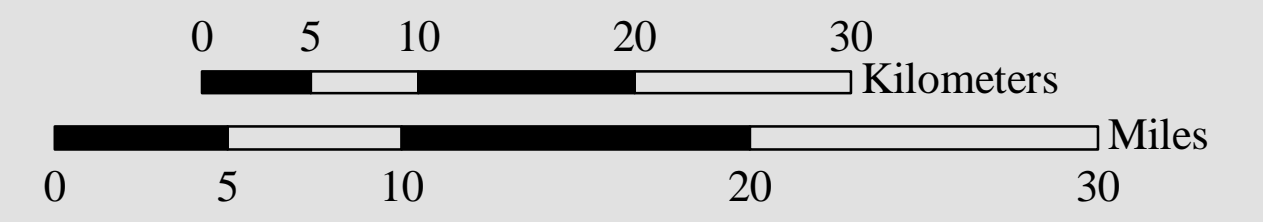
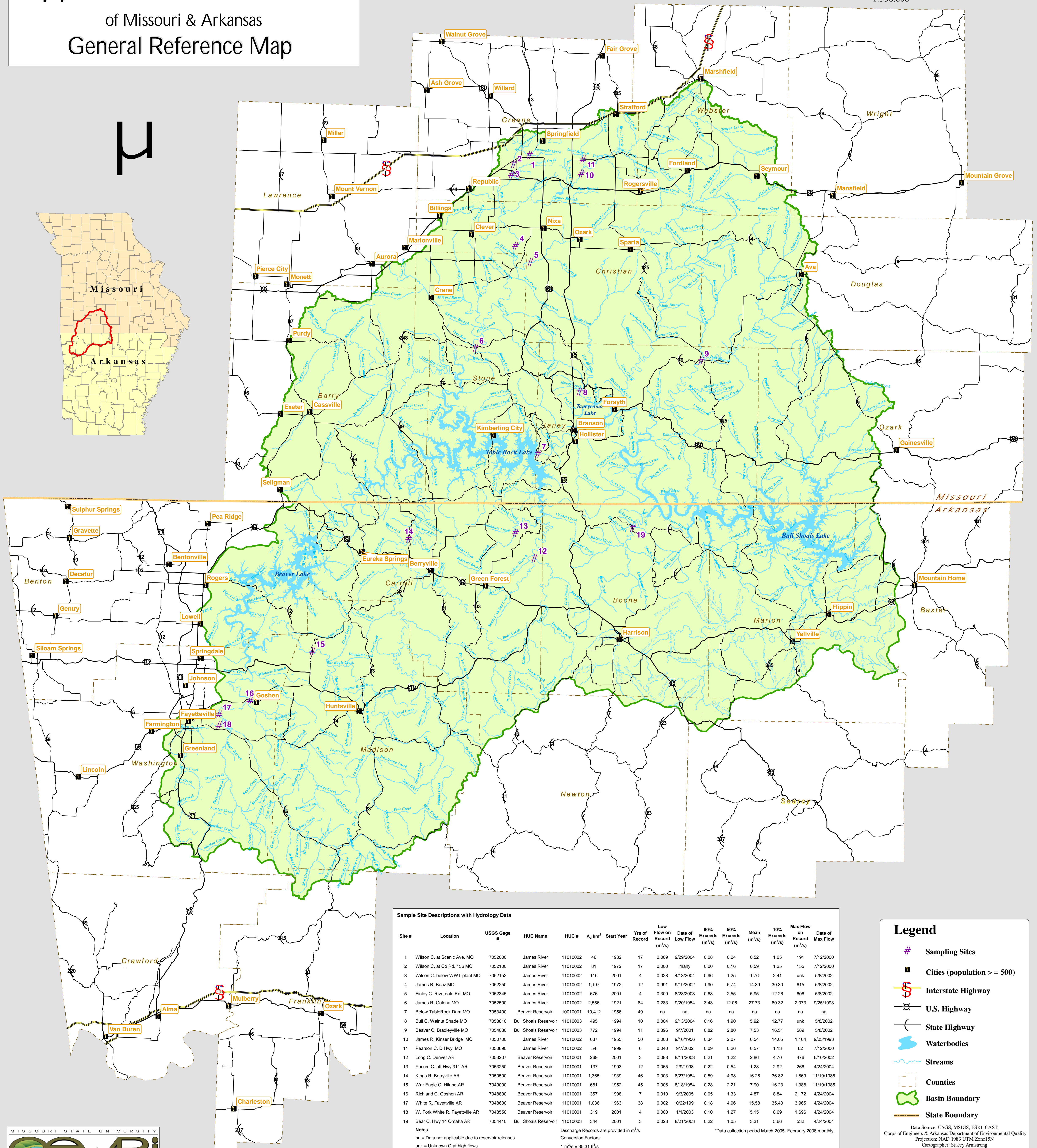
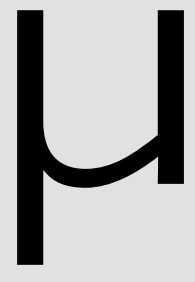


# Upper White River Basin

## of Missouri & Arkansas General Reference Map



1:350,000



### Sample Site Descriptions with Hydrology Data

| Site # | Location                         | USGS Gage # | HUC Name              | HUC #    | A <sub>d</sub> km <sup>2</sup> | Start Year | Yrs of Record | Low Flow on Record (m <sup>3</sup> /s) | Date of Low Flow | 90% Exceeds (m <sup>3</sup> /s) | 50% Exceeds (m <sup>3</sup> /s) | Mean (m <sup>3</sup> /s) | 10% Exceeds (m <sup>3</sup> /s) | Max Flow on Record (m <sup>3</sup> /s) | Date of Max Flow |
|--------|----------------------------------|-------------|-----------------------|----------|--------------------------------|------------|---------------|--|------------------|---------------------------------|---------------------------------|--------------------------|---------------------------------|--|------------------|
| 1      | Wilson C. at Scenic Ave. MO      | 7052000     | James River           | 11010002 | 46                             | 1932       | 17            | 0.009                                  | 9/29/2004        | 0.08                            | 0.24                            | 0.52                     | 1.05                            | 191                                    | 7/12/2000        |
| 2      | Wilson C. at Co Rd. 156 MO       | 7052100     | James River           | 11010002 | 81                             | 1972       | 17            | 0.000                                  | many             | 0.00                            | 0.16                            | 0.59                     | 1.25                            | 155                                    | 7/12/2000        |
| 3      | Wilson C. below WWT plant MO     | 7052152     | James River           | 11010002 | 116                            | 2001       | 4             | 0.028                                  | 4/13/2004        | 0.96                            | 1.25                            | 1.76                     | 2.41                            | unk                                    | 5/8/2002         |
| 4      | James R. Boaz MO                 | 11010002    | James River           | 11010002 | 1,197                          | 1972       | 12            | 0.991                                  | 9/19/2002        | 1.90                            | 6.74                            | 14.39                    | 30.30                           | 615                                    | 5/8/2002         |
| 5      | Finley C. Riverdale Rd. MO       | 7052345     | James River           | 11010002 | 676                            | 2001       | 4             | 0.309                                  | 8/28/2003        | 0.68                            | 2.55                            | 5.95                     | 12.26                           | 606                                    | 5/8/2002         |
| 6      | James R. Galena MO               | 7052500     | James River           | 11010002 | 2,556                          | 1921       | 84            | 0.283                                  | 9/20/1954        | 3.43                            | 12.06                           | 27.73                    | 60.32                           | 2,073                                  | 9/25/1993        |
| 7      | Below TableRock Dam MO           | 7053400     | Beaver Reservoir      | 10010001 | 10,412                         | 1956       | 49            | na                                     | na               | na                              | na                              | na                       | na                              | na                                     | na               |
| 8      | Bull C. Walnut Shade MO          | 7053810     | Bull Shoals Reservoir | 11010003 | 495                            | 1994       | 10            | 0.004                                  | 9/13/2004        | 0.16                            | 1.90                            | 5.92                     | 12.77                           | unk                                    | 5/8/2002         |
| 9      | James C. Bradleyville MO         | 7054080     | Bull Shoals Reservoir | 11010003 | 772                            | 1994       | 11            | 0.396                                  | 9/7/2001         | 0.82                            | 2.80                            | 7.53                     | 16.51                           | 589                                    | 5/8/2002         |
| 10     | James R. Kinser Bridge MO        | 7050700     | James River           | 11010002 | 637                            | 1955       | 50            | 0.003                                  | 9/16/1956        | 0.34                            | 2.07                            | 6.54                     | 14.05                           | 1,164                                  | 9/25/1993        |
| 11     | Pearson C. D Hwy. MO             | 7050690     | James River           | 11010002 | 54                             | 1999       | 6             | 0.040                                  | 9/7/2002         | 0.09                            | 0.26                            | 0.57                     | 1.13                            | 62                                     | 7/12/2000        |
| 12     | Long C. Denver AR                | 7053207     | Beaver Reservoir      | 11010001 | 269                            | 2001       | 3             | 0.088                                  | 8/11/2003        | 0.21                            | 1.22                            | 2.86                     | 4.70                            | 476                                    | 6/10/2002        |
| 13     | Yocum C. off Hwy 311 AR          | 7053250     | Beaver Reservoir      | 11010001 | 137                            | 1993       | 12            | 0.065                                  | 2/9/1998         | 0.22                            | 0.54                            | 1.28                     | 2.92                            | 266                                    | 4/24/2004        |
| 14     | Kings R. Berryville AR           | 7050500     | Beaver Reservoir      | 11010001 | 1,365                          | 1939       | 46            | 0.003                                  | 8/27/1954        | 0.59                            | 4.98                            | 16.26                    | 36.82                           | 1,869                                  | 11/19/1985       |
| 15     | War Eagle C. Hilland AR          | 7049000     | Beaver Reservoir      | 11010001 | 681                            | 1952       | 45            | 0.006                                  | 8/18/1954        | 0.28                            | 2.21                            | 7.90                     | 16.23                           | 1,388                                  | 11/19/1985       |
| 16     | Richland C. Goshen AR            | 7048800     | Beaver Reservoir      | 11010001 | 357                            | 1998       | 7             | 0.010                                  | 9/3/2005         | 0.05                            | 1.33                            | 4.87                     | 8.84                            | 2,172                                  | 4/24/2004        |
| 17     | White R. Fayetteville AR         | 7048600     | Beaver Reservoir      | 11010001 | 1,036                          | 1963       | 38            | 0.002                                  | 10/22/1991       | 0.18                            | 4.96                            | 15.58                    | 35.40                           | 3,965                                  | 4/24/2004        |
| 18     | W. Fork White R. Fayetteville AR | 7048550     | Beaver Reservoir      | 11010001 | 319                            | 2001       | 4             | 0.000                                  | 1/1/2003         | 0.10                            | 1.27                            | 5.15                     | 8.69                            | 1,696                                  | 4/24/2004        |
| 19     | Bear C. Hwy 14 Omaha AR          | 7054410     | Bull Shoals Reservoir | 11010003 | 344                            | 2001       | 3             | 0.028                                  | 8/21/2003        | 0.22                            | 1.05                            | 3.31                     | 5.66                            | 532                                    | 4/24/2004        |

### Notes

na = Data not applicable due to reservoir releases  
unk = Unknown Q at high flows  
A<sub>d</sub> = Drainage Area (km<sup>2</sup>)

Discharge Records are provided in m<sup>3</sup>/s  
Conversion Factors:  
1 m<sup>3</sup>/s = 35.31 ft<sup>3</sup>/s  
1 m<sup>3</sup>/s = 22.83 million gallons/day

\*Data collection period March 2005 - February 2006 monthly.

### Legend

- # Sampling Sites
- Cities (population >= 500)
- Ⓢ Interstate Highway
- Ⓜ U.S. Highway
- Ⓜ State Highway
- Waterbodies
- Streams
- Counties
- Basin Boundary
- State Boundary

Data Source: USGS, MSDIS, ESRI, CAST,  
Corps of Engineers & Arkansas Department of Environmental Quality  
Projection: NAD 1983 UTM Zone 15N  
Cartographer: Stacey Armstrong  
Date: February 2007